



The complementary system for Animal Health

Kanchem⁺
P H A R M A C E U T I C A L S

: Head Office :

20, Abhishree Complex, Opp. Star India Bazar, Satellite, Ahmedabad 15, Gujarat.

: Regional Offices :

1F-39, B. P. Nit, Faridabad 121001

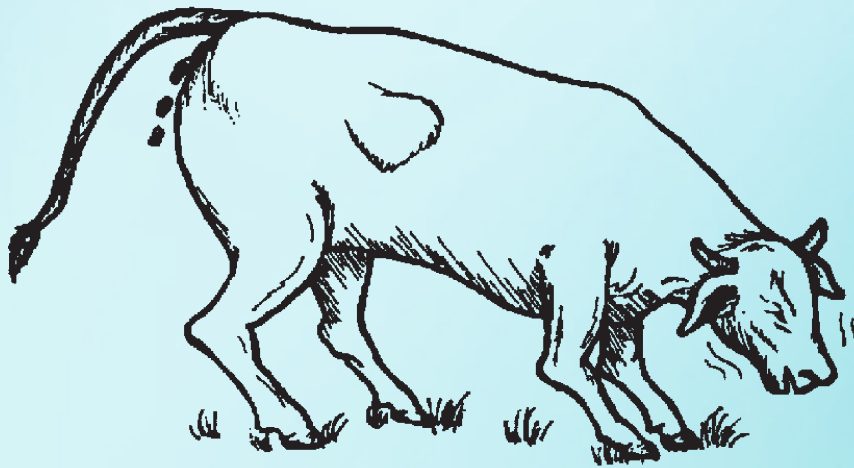
49, G. C. Avenue, Kolkata 700013

#41/1, 42/1, Site No. 1, Hanumanthappa Lay-out, Nayandahalli, Maysore Road, Bangalore 560039

Customer Care: 75 75 00 88 22 | Email: support@kanchem.com

Diarrokan Bolus

An effective drug combination for control of diarrhoea
(Metronidazole + Furazolidone+ Atropine)



Each Uncoated Bolus Contains

Metronidazole - 1000 mg.
Furazolidone - 500 mg.
Atropine Sulphate : 0.5 mg.
Excipients : q.s.

INDICATIONS

- * Diarrhoea due to mixed bacterial infections
- * Enteritis
- * Dysentery
- * Bovine coccidiosis
- * Giardiasis
- * Bacteremic salmonellosis
- * Trichomoniasis
- * Amoebiasis

RECOMMENDATIONS

Cattle, House & Camel: 1-2 bolus twice a day for 2 to 3 days
Sheep, Goat & Calves: 1/2 bolus twice a day for 2 to 3 days
or as directed by the Veterinarian.



Kanchem[®]
PHARMACEUTICALS

Gastro Boost

An ideal feed supplement for
Animal stomach



COMPOSITION

Each Bolus contains:

Live Lactobacillus sporogenous Culture	: 20 Million CFU
Live Saccharomyces boulardi culture	: 50 Million CFU
Live Saccharomyces Cervisiae Culture	: 3.5 g
DL-Methionine	: 483 mg
L-Lysine	: 483 mg
Sodium Bicarbonate	: 250 mg
Dried Aluminium Hydroxide	: 150 mg
Magnesium Trisilicate	: 150 mg
Phytase	: 25 FTU
Cellulase	: 125 mcu
Beta glucanase	: 30 units
Liver Extract	: 10 mg
Excipients	: q.s.

ADVANTAGES

- * Stimulates appetite and corrects anorexia.
- * Improves nutrient digestion.
- * Removes harmful pathogens from gut.
- * Maintains normal ruminal pH.
- * Recommended in the conditions like indigestion, stress and diarrhoea.

RECOMMENDATIONS

Cattle, Horse & Camel: 1-2 bolus daily for 3 to 5 days
Sheep, Goat & Calves: 1/2 bolus daily for 3 to 5 days.

PRESENTATION

1^sx6x10 (Box)



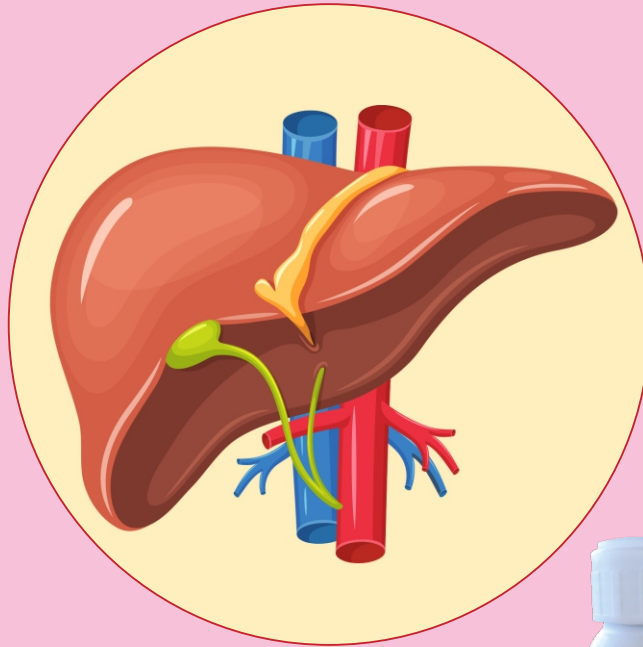
Kanchem[®]
PHARMACEUTICALS

GASTRO

KANLIV PLUS

केनलीव प्लस

Ideal Liver Tonic for Optimising of Liver Function



DIRECTIONS FOR USE:

Large Animals : 30-50 ml daily
Small Animals : 15-20 ml daily
or as directed by veterinary consultant

COMPOSITION:

Each 30 ml contains:

Calcium Lactate	300 mg
Forrous Gluconate	200 mg
Liver Fraction 2	150 mg
Ferrous Chloride	80 mg
Nicotinamide	45 mg
Nicotinic Acid	20 mg
Riboflavine	5 mg
Thaimine Hydrochloride	5 mg
Choline Chloride	100 mg
Herbal MHA	200 mg
Silymarine	200 mg
Aqueous Base	Q.S.

KANLIV
PLUS

BENEFITS:

- * Helps in strengthens immune system
- * Helps in regulate liver function
- * Helps in proper utilization of nutriants.
- * Helps in increase blood flow to uterus
- * Helps in maintain health during pregnancy
- * Helps in maintain hormonal balance
- * Helps in increases matabolic activity & stimulates appetite
- * Help in proper weight gain

AVAILABILITY: 250ml, 500ml, 1 ltr., 5 ltr.

Kanchem[®]
PHARMACEUTICALS

THB BOLUS

TISSUE HEALING BOLUS

टीएचबी बोलस

For Speedy Recovery of Damaged Tissues



Metritis



Mastitis



Surgical Wounds



FMD Lesions



Each uncoated bolus contains

Zinc Sulphate	150 mg
D-Biotin	100 mcg
Bromelain	160 mg
Vitamin A	14000 IU
Vitamin E	300 mg
Vitamin D3	2800 IU
L-Lysine	600 mg
Aloe Vera	50 mg
DL - Methionine	600 mg
Vitamin B12	20 mcg
Choline Chloride	500 mg

THB
BOLUS

ADVANTAGES

- * Recommended during post surgical therapy, FMD Lesions, Chronic wounds, Mastitis, Metritis and in Degnala disease
- * Helps for revitalisation of damaged tissue
- * Brings back the animals to normal production faster

RECOMMANDATION:

Cattle, Horse & Camel:
1-2 bolus daily for 10 days
Sheep, Goat & Calves :
1/2 bolus daily for 10 days

PRESENTATION

1^s x 4 x 10 (Box)

PRECAUTIONS:

Store in a cool place.
Keep away from heat and direct sunlight.

Withdrawal Period: Not applicable

Kanchem[®]
PHARMACEUTICALS

OZONE FRIENDLY

NEXT GENERATION
Veterinary Aerosol Spray

COMPOSITION (In 100 ml)

Turpentine Oil (Dedrus Deodara)	15.70%
Nimba Oil (Azadiracta Indica)	7.00%
Karanj Oil (Pongomia Glabra)	4.00%
Tailapatra Oil (Eucalyptus Globules)	4.50%
Haridra Oil (Curcuma Longa)	0.30%
Camphor Oil (Camphora Officinarum)	4.50%
Excipients and Propellent	Q.S.

INDICATIONS

- * In Myiasis (Maggoted wounds) & other type of wounds
- * All types of Vrunas (wounds, including surgical wounds)
- * Yoke and Rope Galls Pada Daha (Foot lesions in FMD)
- * Kiribha (Degonalla)
- * Kshudra Kusta (Dermatomycosis, Mange/Scabies, Eczema)
- * Mange (Scabies, Eczema)
- * Krimi Roga (Ringworm)
- * Twak Roga (Ringworm)
- * Twak Roga (Post Shearing Skin Lesion in Sheep)
- * Keetanashaka (Fly Repellent)

PRESENTATION

100 ML.

WHS

**WOUND
HEALING
SPRAY**

**AYURVEDIC
VETERINARY
MEDICINE**



WHS

वुन्ड हीलींग स्प्रे

with

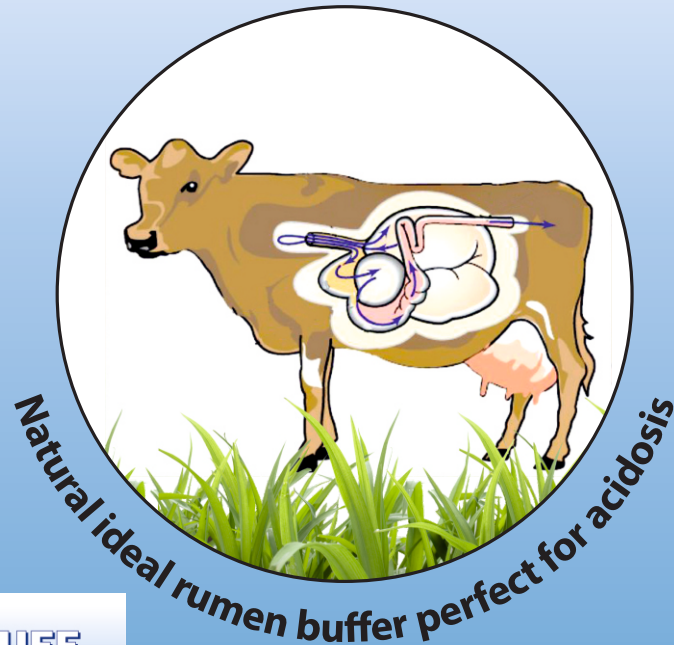
Antiseptic, Fly Repellent and Maggoticidal Properties



Kanchem
Pharmaceuticals

ACIDOBUFF

असिडोबफ



Composition:

Each 100gm contains:

Lithothamnium Calcareum : 65g

Live Yeast Culture

(Saccharomyces cerevisiae) : 15g

Excipient : q.s.

Advantages:

- * Helps in correct ruminal acidosis
- * Helps in corrects any kind of indigestion in a very short time
- * Acidobuff has a perfect & superior stomachic value over any Herbal product
- * Helps in stabilises ruminal pH & restores ruminal motility very fast
- * Helps in bring hunger to the animals, thereby improves dry matter intake
- * Acidobuff act as a supportive therapy in any kind of treatment.
- * Helps in enhances production performance of animals.
- * Acidobuff halter could be prepared and tied in the mouth of affected animal which will stimulate movement of jaws to restart rumination and saliva will be produced naturally.

ACIDO

Recommendations:

Large animals : 50-100g per day per animal

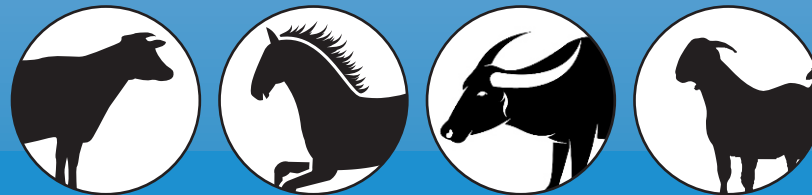
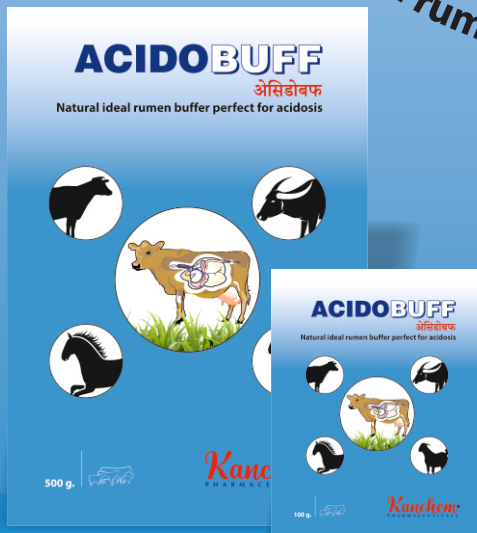
Small animals : 25-50 g per day per animal

Goat and sheep : 5-10 g per day per animal

Mixing ratio in feed : 0.5-1% W/W

Availability:

Available in 100g sachet, 500 g & 10 kg bag



Kanchem[®]
PHARMACEUTICALS

LACTO KAN

लेक्टोकेन

An ideal milk fat enhancer for dairy animals

Nutritional Value per 1 KG

Calcium	68 g
Saccharomyces Cerevisiae	140 g
Herbal Glactogogues	100 g
Bypass fat	660 g
Excipients	q.s.

ADVANTAGE

- * Increases milk production significantly
- * Improves digestibility of feed
- * Improves body score condition in animals
- * Increases milk fat instantly
- * Reduces heat stress in animals during summer
- * Improves energy content of feed

FOR OVERALL GROWTH

Calves / Heifers : 30g / animal / day.

Old animal: 40g / animal / day.

Working animals : 50g / animal / day.

AVAILABILITY

1 Kg / 5 Kg / 25 Kg Bag

RECOMMENDATIONS

FOR PREVENTION OF NEGATIVE ENERGY
BALANCE IN ANIMALS

One month before parturition:

100-150g per animal per day

After parturition upto 150 days:

100g/animsl/day

In feed:

1.5-2% in feed or 15-20 kg per tonne of feed



LACTO
KAN

Kanchem[®]
PHARMACEUTICALS

TOXIOUT

टोक्सीआउट

The most powerful toxin binder for ruminants



Reproductive Effects

AFB1, ZEN, Ergots, T-2, HT-2, PR

- * Irregular heats
- * Low conception rates
- * Ovarian Cysts
- * Embryonic Loss
- * Abortions
- * Premature mammary gland development of prepubertal heifers
- * ↓ milk production
- * ↓ testicular development
- * ↓ sperm production
- * ↓ semen quality (T-2, HT-2)

Kidney Health

AFB1, FUM, CIT, PAT, PR

- * Increased kidney weight
- * Kidney lesions

Liver Health

AFB1, FUM, PA, PR

- * Liver cancer
- * Increased liver weight
- * Liver lesions
- * Hepatocellular damage (FUM)

Gastrointestinal Effects

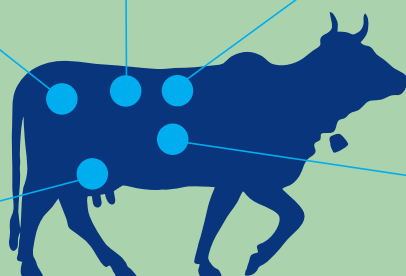
AFB1, DON, T-2, HT-2, OTA, Ergots, CIT, PAT, PR, MPA

- * Gastroenteritis
- * Gastrointestinal Lesions
- * Intestinal hemorrhages
- * Impaired rumen function
- * ↓ rumen motility
- * Shifts in rumen pH and VFA production
- * ↓ dry matter digestibility
- * ↓ in crude protein and fibre digestibility
- * Diarrhea
- * Split out cuds
- * Ketosis

Other common complications

AFB, DON, T-2, HT-2, OTA, Ergots, RQC, MPA, CIT, PAT, GT, PA, PR

- * Impaired thermoregulation
- * Convulsions and neurological signs
- * Mastitis and laminitis
- * ↓ milk production
- * Residues in milk (AFB1)
- * Immune dysfunction
- * Growth inhibition



Composition:

A superior combination of Activated Carbon Compound, Zeolites (HSCAS), rumen pH stabilizer and Mannan Oligosaccharides (MOS).

Recommendations:

500g/ton of feed to be mixed well with feed or as recommended by animals nutritionist

Presentation:

Available in 100gm, 1kg & 10 kg

Advantages:

- * Prevents chances of aflatoxicosis in animals.
- * Also binds other harmful mycotoxins like Deoxynivalenol (DON), Zeoralenone, Ochratoxin, T-2 toxin etc.
- * Binds the mycotoxins very efficiently by forming a stable complex with the mycotoxins in digestive tract
- * Stabilizes the ruminal pH and stabilizes ruminal eubiosis
- * Activated carbon compound in Toxiout will help in reducing subclinical mastitis so it will result in increase of milk production.
- * Activated Carbon compound helps to remove bad odour of dung.
- * Activated carbon compound also creates atmosphere in minimising laminitis.
- * Reduces the damage of intestinal and liver tissue caused by the presence of Mycotoxins.
- * Improves overall health and production performance of animals.
- * Reduces mycotoxin residues from milk and milk products.

TOXI
OUT

Kanchem[®]
PHARMACEUTICALS

KANCICAL

GOLD

With Chelated Minerals

केनसीकेल-गोल्ड

An outstanding milk enhancer for dairy animals with golden formula



CONTAINTS

Each 100ml provides	
Calcium (Bioavailable)	6100 mg
Phosphorus (Bioavailable)	3050 mg
Vitamin A	45000 IU
Vitamin D3	12000 IU
Vitamin E	150000 mcg
Vitamin B12	100 mcg
Chromium	200 ppm
Asparagus Racemosus	1000 mg
Leptadena Reticulata	1000 mg
Piper longum	400 mg
Zinc-Chelated	1500 mg
Silymarin	450 mg
Copper-Chelated	500 mg
Carbohydrates	25000 mg
Base	qs to 100 ml

PRESENTATION

500 ml, 1 Ltr, 2 Ltr, 5 Ltr, 10 Ltr, 20 Ltr

BENEFITS:

- * Ensures enhanced milk production.
- * Ensures stronger bones and better growth with higher bioavailability of Calcium, phosphorus & other Minerals
- * Ensures improved vigour & energy.

DIRECTION OF USE

Cow, Buffalo & Horses	: 50-100 ml daily
Calf, Colt, Foal	: 30-50 ml daily
Sheep & Goat	: 20 ml daily

KANCI
CAL

Kanchem[®]
PHARMACEUTICALS

A Broad Spectrum Anthelmintic against endo and ectoparasites for Livestock

KANMectin-F

केनमेकटीन-एफ बोलस

Fenbendazole & Ivermectin Vet Bolus



Composition:

Each uncoated bolus contains:
Fenbendazole I.P. 3gm.
Ivermectin I.P. 100mg.
Excipients q.s.

Dosage:

- * As directed by the veterinarian.
- * Store in a cool, dry & dark place below 25°C
- * Protect from moisture and sunlight.
- * Broad spectrum Dewormer.



KAN
MECTIN-F

Kanchem[®]
PHARMACEUTICALS

A Broad Spectrum Anthelmintic against endo and ectoparasites for Livestock

KANMectin-OX BOLUS

केनमेकटीन-ओअेक्स-बोलस

Composition:

Each uncoated bolus contains:

Oxfendazole I.P. 2200 mg

Ivermectin I.P. 100mg.

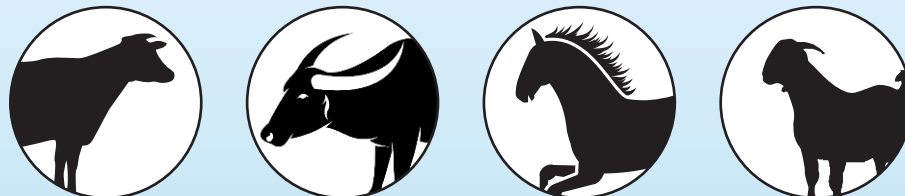
Excipients q.s.

Indication:

For treatment of gastrointestinal roundworms, lungworms including adults and L4-larvae of the most important species as well as against arrested larvae and tapeworm of livestock's including Heart worm, Ticks & Mites.

Dosage:

1 bolus/300 kg b. wt.
or as directed by viterinarian.



KAN
MECTIN
OX

Kanchem[®]
PHARMACEUTICALS

FASKAN

**Most powerful anthelmintic
against flukes for cattles**

FOR ORAL ADMINISTRATION



Composition:

Each ML contains:
Closantel 150mg
Aqueous Base q.s.
Colour: Ponceau 4R

Dosage:

Cattle, Sheep:
For Fasciola Species: 2.5ml/25kg body weight
For other endoparasites: 2.5ml/50kg body weight

Cattle, Sheep & Dog:
For ectoparasites: 6.5 ml / 50 kg body weight
Or as directed by the Veterinary Practitioner

Availability:

30 ml., 100 ml., 500ml.



FAS
KAN

Kanchem⁺
PHARMACEUTICALS

KANITRAZ

केनीट्राझ

**Amitraz Dip Concentrate Liquid I.P.
For Eradication of Ectoparasites**



COMPOSITION:

Each ml contains:

Amitraz I.P. : 125mg
Solvent and Emulsifiers : q.s.

INDICATIONS:

For prevention and control of ticks, mites, lice and keds in cattle, sheep, goat, camel and pig.

WITHDRAWAL PERIOD:

No withholding time for milk, Meat 7 days.

DIRECTIONS FOR USAGES:

Kanitraz can be used either as a spray or dip.

Animal	Kanitraz per litre of water for ticks	Kanitraz per litre of water for mites, lice and keds
Cattle/Camel	2.0 mL	2.0 mL
Sheep/Goat	4.0 mL	4.0 mL
Pigs	4.0 mL	4.0 mL

- * Infested and non infested animals can be treated at the same time in a group.
- * In severe cases of mange or lice a second treatment is recommended 7-10 days after the first treatment.

AVAILABILITY: 6ml, 15ml, 50ml, 500 ml, 1ltr.

KAN
ITRAZ

Kanchem
PHARMACEUTICALS

Flumethrin 1% Pour-On Solution

KanFLU

Pour-On

केनफ्लू

Dosage and Administration:

Apply KANFLU, 1.0 ml/10Kg of Body Weight, evenly along mid line of back from front of shoulder to tail setting using KANFLU measuring cup.

Precautionary Measures:

Keep out of the reach of children and uninformed persons avoid contact with skin and mucous membrane. In case of accidental contamination wash immediately and thoroughly with soap & water.

Uses and Indications:

For control and management of all ticks species including strains resistant to carbamates, amidines, chlorinated hydrocarbons, organophosphates and organochlorine group of insecticides.



Composition:

Each ml of KANFLU contains:
Flumethrin 10 mg

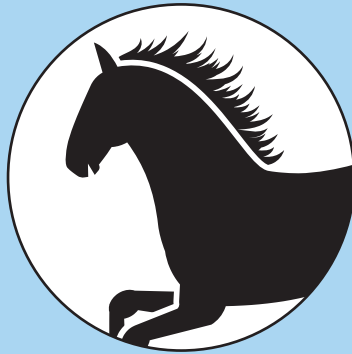
KANFLU

Kanchem[®]
PHARMACEUTICALS

KANFERT

केनफर्ट

REPRODUCTIVE PERFORMANCE ENHANCER



Nutritional value per bolus

Zinc Sulphate	360 mg	Iodine	140 mg
Manganese	560 mcg	Selenium	6 mg
Cobalt	60 mg	Chromium	16 mg
Copper	700 mg	Vitamin A	12000 IU
Iron	1500 mg	Vitamin E	20 mg

ADVANTAGES

- * Correct anoestrus due to mineral deficiency
- * Improves conception rate in repeat breeders
- * Improves the under developed genitalia and brings onset of puberty
- * Regulates oestrus cycle
- * Prevents early embryonic mortality
- * Tones up breeding efficiency and optimized fertility
- * Improves semen quality in males

RECOMMANDATION

Cattle, Horse & Camel 1-2 bolus daily for 10 days
Sheep, Goat & Calves 1/2 bolus daily for 10 days

PRECAUTIONS

- * Store in a cool place.
- * Keep away from heat & direct sunlight.
- * Keep out of reach of children.



Kanchem[®]
PHARMACEUTICALS

KAN
FERT

KANMIN FORTE

केनमीन फोर्ट

**Metho Chelated minerals with Vitamins for
Improvement of Productivity & Fertility**



MIXING RATIO recommendation:

- * 30g per Cow / Buffalo per day to be mixed in feed.
- * 15g per Calf / Sheep / Goat per day.
- * 1kg to be mixed per 100 kg of feed.
- * 30g per Horse / Camel per day to be mixed in feed.

Nutritional Value per 1 KG

Calcium	270 g	Iron	1.5 g
Phosphorus	130 g	Selenium	10 mg
Magnesium	6.0 g	Vitamin A	7,00,000 IU
Manganese	1500 mg	Vitamin D ₃	1,40,000 IU
Zinc	3000 mg	Vitamin E	250 mg
Copper	1200 mg	Niacinamide	1000 mg
Cabalt	150 mg	Chromium	10 mg
Iodine	325 mg	Folic Acid	100 mg
Sulphur	7.2 g	Excipients	Q.S.
Fluorine (max)	300 mg		
Potassium	100 mg		
Sodium	6 mg		
Iron			

ADVANTAGES

- * Maintains and improves milk productions significantly
- * Reduces stress Conditions
- * Maximizes bio availability of minerals
- * Improves fertility
- * Improves milk quality
- * Corrects lameness
- * Reduces chances of Mastitis
- * Use during pregnancy

**Available in 500gm, 1Kg, 5Kg Bag &
25 Kg (Bucket & Bag)**



Kanchem[®]
PHARMACEUTICALS

KANMIN
FORTE

KANCEIVE

केनसिव

Animal Feed Supplement Liquid
Conception rate enhancer



This product is not intended to diagnose, treat, cure or prevent any disease.

KAN
CEIVE

COMPOSITION:

Each 10 ml liquid has Nutritional value of-Polyherbs Abroma augusta, Rubia Cordifolia, Cyperus rotundus, Cynodon dactylon, Terminalia chebula, Bacopa monneiria, Poganum harmala, Saraca Indica, Argyria speciosa, Putrajeeva rodburghii

BENEFITS:

- * Helps in improves uterine tone
- * Helps in improves uterine contractions
- * Helps in improves motility of sperms and ovum
- * Helps in improves uterine turgidity and helps in establishing pregnancy
- * Helps In tones up the uterine lining for implantation
- * Helps in improves uterine health
- * Helps in reduces chances of uterine infections

RECOMMENDATION

Administration 225 ml Orally after A.I.
with drinking Water

Use after AI

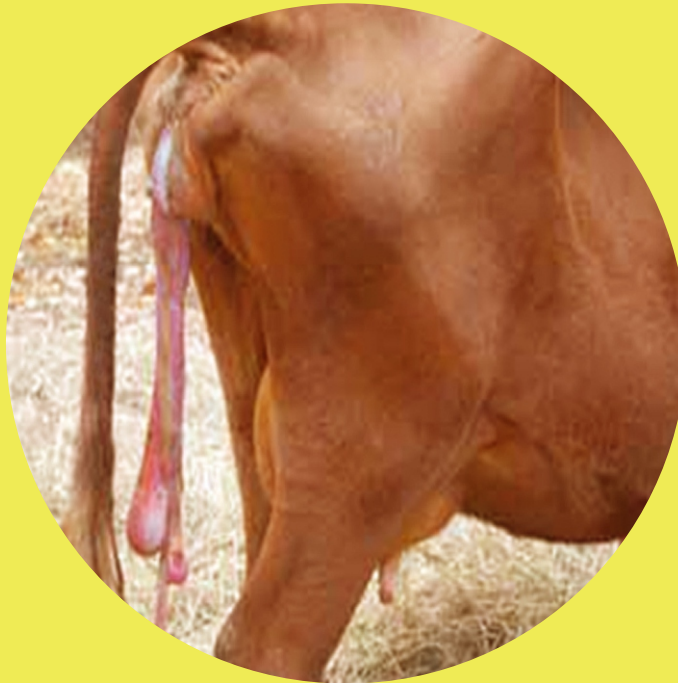


Kanchem[®]
PHARMACEUTICALS

KAN ROP

केन रोप

Herbal Uterine Tonic for Expulsion of Retained Placenta



DOSAGE:

450 ml, instantly after parturition & repeat after 6 hours. For any other uterine dysfunction 150 ml / per day.



COMPOSITION:

Each 5 ml syrup contains:

Citrullus Colocynthis	250 mg
Aristolochia indica	250 mg
Cedrus deodara	150 mg
Dashmool	100 mg
Syzygium Cumini	40 mg
Asparagus Racemosus	40 mg
Withania Somnifera	40 mg
Symplocos racemosa	20 mg
Terminalia chebula	20 mg
Terminalia bellirica	20 mg
Phyllanthus emblica	20 mg
Phyllanthus niruri	15 mg
Glycyrrhiza Glabra	15 mg
Azadirachta indica	15 mg
Ceiba pentandra	10 mg
Sida cordifolia	10 mg
Hemidesmus indicus	10 mg
Hibiscus rosasinesis	10 mg
Acacia catechuoides	10 mg
Holarrhena antidysenterica	5 mg
Embelia ribes	5 mg
Tinospora cordifolia	5 mg
Syrupy base	q.s.

KANROP

BENEFITS:

- * Helps in Regulates estrogen hormones.
- * Helps in ovulation.
- * Helps in keeping uterine wall healthy.
- * Helps in Promotes involuton of uterus.
- * Helps in for cure in metritis, endometritis, pyometra and other uterine dysfunction.

AVAILABILITY: 250ml, 500ml, 1 ltr.

Kanchem[®]
PHARMACEUTICALS

KANPROFAT

केनप्रोफेट

**A complete nutritional supplement
Milk, Fat, SNF enhancer
Growth Promoter**



Nutritional Value per 1 KG

Bypass Protein	400 g	Manganese	600 mg
Bypass fat	200 g	Chromium	6 mg
Calcium	102 g	Vitamin A	2,80,000 IU
Phosphorous	51 g	Vitamin D3	28000 IU
Chelated Zinc	3.4 g	Vitamin E	100 mg
Chelated copper	1.68 g	Niacin	400 mg
Cobalt	60 mg	Biotin(2%)	160 mg
Iron	1.5 g	Folic Acid	1000 mg
Magnesium	2.4 g	Yeast	50 g

KAN
PROFAT

ADVANTAGES:

- High energy bypass fat and rich bypass protein in Kanprofat helps to improve milk production significantly in high yielders
- Provides strong immunity
- Increases milk fat and milk protein % significantly
- Enhances Average Daily Gain in animals
- Helps to increase body weight in calves/heifers/sheep/goats
- Helps in enhances reproductive performance
- Improves overall health
- Helps in improvement of ruminal digestion
- Improves body condition score

RECOMMANDATION

Large Animal : 100gm Daily High Yielders
Small Animals: Sheep, Goat - 20-50 gm
Growth : Sheep, Goat, Caves : 20-50gm daily

PRECAUTIONS:

Store in a cool place.
Keep away from heat &
direct sunlight.

AVAILABILITY:

1Kg, 5Kg & 20 kg bag

Kanchem[®]
PHARMACEUTICALS

KANVIT

केनवित

Multi Vitamin Injection

FOR I.M. USE
FOR VETERINARY USE ONLY

- Helps in strengthen udder tissue and muscles
- Helps in to support sperm count in breeding animals
- Help to maintain Good nutrition & milk yield in animals
- Prevents muscular dystrophy
- Strengthen Nervous system
- Strengthen Reproductive System
- Helps in improve Reproductive functions
- Helps in development of reproductive organs
- Helps in correct anoestrous due to vitamins deficiency
- Improve Vitamins deficiency in weak & debility animals



Composition:

Each ml contains:		
Vitamin A	I.P.	1000 I.U.
Vitamin D3	I.P.	500 I.U.
Niacinamide	I.P.	10mg
Thiamine Hydrochloride	I.P.	10mg
Pyridoxine Hydrochloride	I.P.	5mg
Riboflavine Sodium		
Phosphate	I.P.	5mg
Cyanocobalamin	I.P.	10mcg
D-Biotin	B.P.	10mcg
D-Pathenol	I.P.	1mg
Choline Chloride		5mg
Alpha Tocopheyl Acetate	I.P.	5mg
Sodium Acid Phosphate	I.P.	10mg
Water for Injection	I.P.	q.s.
for Veterinary Use		

KAN VIT
inj.

Dosages :

For large animals : 5-10 ml/day
Small animals : 2-3 ml/ day
Or as directed by the veterinarian

Availability: 30 ml & 100 ml Vial



Kanchem[®]
PHARMACEUTICALS

KANVIT-12

केनवीट-१२

Inj

An ideal combination of Vitamin B1, B6 & B12

KANVIT-12

CONTAINTS

Each ml contains :

Thiamine Hydrochloride (Vitamin B1)	IP 50mg
Pyridoxine Hydrochloride (Vitamin B6)	IP 50mg
Cyanocobalamin (Vitamin B12)	IP 500mcg
Benzyl Alcohol (As Preservative)	IP 1.5%V/V
Water for Injection	IP q.s.
Withdrawal Period:	
Milk : Nil Meat : Nil	

INDICATIONS

Anorexia, Muscular Dystrophy
Neurone incoordination
For fast recovery from illness
To improve lameness
Highly effective in milk fever

DOSAGE:

As directed by Veterinarian.

PRESENTATION

Available in 30ml & 100 ml Vial



Kanchem[®]
PHARMACEUTICALS

KANVIT - H

केनवीट-एच

Liquid Feed supplement for development of Udder
Protect livestock from Mastitis



DOSAGE

For Large Animals : 10-20 ml twice daily,
For Small Animals : 5-10 ml twice daily
or as directed by Veterinary Consultant.

COMPOSITION

Each ml has nutritional value of

Vitamin A	20000 I.U.
Vitamin D ₃	10000 I.U.
Vitamin E	50 mg
Vitamin C	5 mg
Vitamin B ₁₂	20mcg.
Vitamin H (Biotin)	25mcg.
L-lysine	5 mg
DL Methionine	2.5 mg.
Choline Chloride	10 mg.
Selenium	6 mg.
Excipients	Q.S

KANVIT

ADVANTAGES

- * Helps in strengthen udder tissue and muscles.
- * Helps in to support sperm count in breeding bulls.
- * Helps in to avoid inflammaion and pain.
- * Helps in to maintain good nutrition & milk yield in animals.

AVAILABILITY: 100ml, 250ml, 500 ml, 1 ltr.



Kanchem[®]
PHARMACEUTICALS

CEFTIKAN FORTE

सेफटीकेन फोर्ट

Ceftriaxone+Sulbactam inj

CEFTI
KAN

CONTENTS

Each Vial contains
Ceftriaxone Sodium (Sterile) I.P.
equivalent to Anhydrous Ceftriaxone 3000mg
Sulbactam Sodium (Sterile) USP
equivalent to Anhydrous Sulbactam 1500mg

INDICATIONS

- * Mastitis
- * Pre-operative prophylaxis and operative treatments
- * Respiratory tract infections
- * Pneumonia
- * Haemorrhagic septicaemia
- * Gastro-intestinal tract infections
- * Uro-genital tract infections
- * Bone and joint infections
- * Bacterial septicaemia
- * Animals suffering with impaired defense mechanisms

DOSAGE:

As directed by Veterinarian.

PRESENTATION

Available in 4.5g vial with 20ml
sterile water for injection



Kanchem[®]
PHARMACEUTICALS

1ST
TIME
INTRODUCING

Amoxycillin 20%

Amoxycillin Trihydrate Injection
KANTRIMOX-LA
केनट्रीमोक्स-एल.अे.

COMPOSITION:

Contains per ml:
Amoxycillin (as trihydrate) 200 mg

INDICATIONS

Amoxycillin 20% LA Inj. is effective against infections of the alimentary tract, respiratory tract, urogenital tract, coli-mastitis and secondary bacterial infections during the course of a viral disease in horses, cattle, pigs, goats, sheep, dogs and cats.

DOSAGE AND ADMINISTRATION:

For intramuscular injection. Shake well before use.
General dose : 1ml per 15kg bodyweight
This dosage may be repeated after 48 hours if necessary.
No more than 20ml should be injected into a single site.

PACKING:

30 ml & 100 ml multidose vial

48HOURS
REPEAT AFTER



MOX-LA

Kanchem[®]
PHARMACEUTICALS

Nimesulide, Paracetamol & Serratiopeptidase Bolus (Vet)

NimuKAN-Serra Bolus

निमुकेन-सेरा

COMPOSITION:

In each bolus

Nimesulide	B.P.	400 mg.
Paracetamol	I.P.	1500 mg.
Serratiopeptidase	I.P.	75 mg.
(as gastro-resisant granules equivalent to 150000 enzymatic units)		
Excipients		q.s.

INDICATIONS:

Analgesic, Anti-inflammatory, Antipyretic Ephemeral fever (3 day fever), Pneumonical conditions & bronchitis Mastitis, Metritis, Endometritis, Pyometra, Uterine Prolapse, Arthritis, Musculoskeletal disorders, Bone & Joint Inflammation Laminitis Post operative conditions, Septicaemia, Gastro Enteritis

DOSAGE:

Large Animals : 2-4 bolus daily
Small Animals : 1-2 Bolus Daily Or
As Directed by Veterinarian

PACKING:

1x4x10 (Box)

The most potent Combination of NSAID with Serratiopeptidase for quick relief from Pain, Fever, Exudation and Inflammation

NIMUKAN
SERRA



Kanchem[®]
PHARMACEUTICALS

Nimesulide & Paracetamol Injection

NimuKAN-P

निमुकेन-पी

COMPOSITION:

In each ml

Nimesulide	B.P.	100 mg.
Paracetamol	I.P.	150 mg.
Benzyl Alcohol (as Preservative)	I.P.	2% v/v
Water for Injection	I.P.	q.s.

INDICATIONS:

Analgesic, Anti-inflammatory, Antipyretic Ephemeral fever (3 day fever), Pneumonical conditions & bronchitis Mastitis, Metritis, Endometritis, Pyometra, Uterine Prolapse, Arthritis, Musculoskeletal disorders, Bone & Joint Inflammation Laminitis Post operative conditions, Septicaemia, Gastro Enteritis

DOSAGE:

Large Animals : 10ml
Small Animals : 1-2 ml Or
As Directed by Veterinarian

PACKING:

30 ml & 100 ml. Vial



NIMUKAN
P

Kanchem+
PHARMACEUTICALS

Amoxicillin & Pottassium Clavulanate Tablets I.P.

KANTRIMOX-CLAV

1000 mg

केनट्रीमोक्स-क्लेव

COMPOSITION:

Each film coated tablet contains:

Amoxicillin Trihydrate I.P.

eq. to Amoxicillin

875 mg

Potassium Clavulanate Diluted I.P.

eq. to Clavulanic Acid

125 mg

Excipients

q.s.

INDICATIONS

Kantrimox Clav is effective against infections of the
Alimentary Tract
Respiratory Tract
Urogenital Tract
Coli-mastitis and
secondary bacterial inceptions during
the course of a viral disease in
horses, cattle, pigs, goats,
sheep, dogs and cats.

DOSAGE AND ADMINISTRATION:

6-7 mg / kg. / Body wt.

Large animals 2-3 Tablet twice a day

Small animals 1/2-1 Tablet twice a day

Or As per veterinarian

PACKING:

1x6x10 Tablets



Metritis



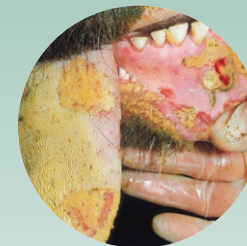
Pyometra



Mastitis



Surgical Wounds



FMD Lesions



Diarrhoea



G.I. Tract Infection

MOX
CLAV

Kanchem[®]
PHARMACEUTICALS

NUTRITIONAL VALUE PER 100 GM

Protein	16.5 g
Carbohydrate	25.63 g
Energy	225 g Kcal
Calcium	15 g
Phosphorus	7.5 g
Probiotic	1 gm
Sodium	1 mg
Potassium	15mg
Magnesium	600 mg
Manganee	150 mg
Zinc	500 mg
Iron	400 mg
Cooper	420 mg
Cobalt	15 mg
Vitamin B1	150 mg
Vitamin B6	90 mg
Vitamin B12	10 mcg
Vitamin A	50000 I.U.
Vitamin D3	10000 I.U.
Vitamin E	20 mg
Vitamin H	100 mcg
Excipients Q.S.	

ADVANTAGE

- * Increases **milk production** & gives instant **energy**
- * Improves **digestibility** of feed
- * Improves body score condition and **weight gain**
- * Helps in maintaining of **Pregnancy**
- * Reduces **heat stress** during summer
- * Improves **immunity power**

RECOMMENDATIONS:

- Small Animals :** 5-10g / animal / day.
Calves / Heifers : 10-20g / animal / day.
Large Animals : 30g / animal / day.

PRESENTATION

1 kg., 5 kg.

Protein Enriched Formula with
Vitamins for Instant Energy

Grown Vita

ग्रोन वीटा

*Ideal product for milk production,
weight gain & immunity booster*



MOX-LA

Kanchem[®]
PHARMACEUTICALS